

Community Governance Review 2022-2023

cgr@wiltshire.gov.uk

Information Sheet

Area Name – Warminster

[Community Governance Review Terms of Reference and LGBCE Guidance](#)

Proposed Schemes

WA1 – Proposed by Warminster Town Council

An increase in the overall number of Town Councillors from 13 to 14. These would be distributed 2,4,4,4 amongst the Unitary Councillor Divisions of Warminster North, Warminster East, Warminster West and Warminster Broadway.

Reason for Request

Warminster Town Council currently has 13 members. Members of the Council unanimously felt that this was an insufficient number for effective governance.

By way of comparison:

Town	Approximate Population	Number of Cllrs
Warminster	17,816	13
Marlborough	8,597	16
Wootton Bassett	12,978	18
Westbury	15,553	15
Melksham	16,533	15
Devizes	16,820	21
Calne	18,089	19

As can be seen, similar (in terms of population or budget) Wiltshire Parishes (shown above) which have an average of 17.3 Councillors. 13 Councillors is fewer than any of those listed, even an increase to 14 would still leave Warminster with fewer councillors than any of the above towns.

Warminster is an active Council with a growing population, growing responsibilities and increasing precept. To have one of the unitary divisions with just 3 town councillors instead of 4 like the other two is anomalous and unjustified. The town council strongly believes that the Unitary Divisions in Warminster should be treated equitably.

Background Information

Parish Electorates - August 2022

Warminster total - 13,852 Electorate
Warminster North Ward – 2280 Electorate (2 Cllrs)
Warminster East Ward – 4223 Electorate (4 Cllrs)
Warminster West Ward – 3359 Electorate (4 Cllrs)
Warminster Broadway Ward – 3990 Electorate (3 Cllrs)
Bishopstrow – 119 Electorate
Corsley – 576 Electorate

Community Governance Review 2022-2023

cgr@wiltshire.gov.uk

Longbridge Deverill – 722 Electorate
Norton Bavant – 103 Electorate
Sutton Veny – 573 Electorate
Upton Scudamore – 247 Electorate

Projected Electorate for 2026 (including major development)

Warminster total - 14,835 Projected
Warminster North Ward – 2367 Projected
Warminster East Ward – 4428 Projected
Warminster West Ward – 3809 Projected
Warminster Broadway Ward – 4231 Projected
Bishopstrow – 124 Projected
Corsley – 598 Projected
Longbridge Deverill – 749 Projected
Norton Bavant – 107 Projected
Sutton Veny – 595 Projected
Upton Scudamore – 256 Projected

Council Tax by Parish, including Police and Fire Precepts

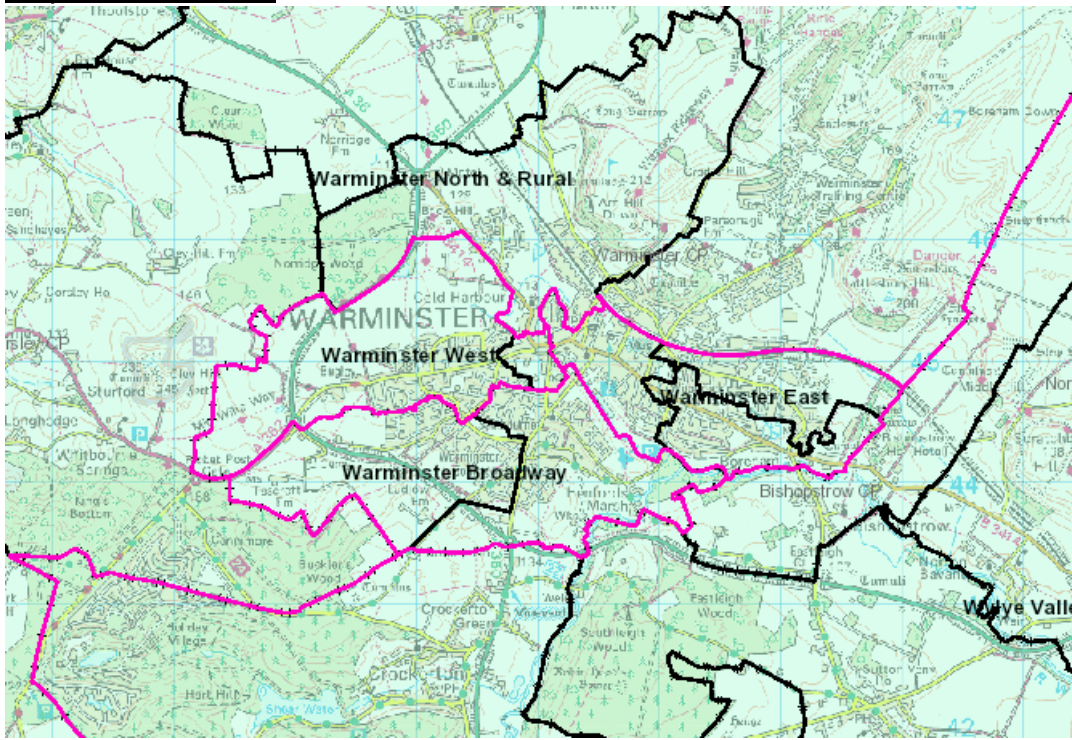
This data is provided for information, however please note that Community Governance Reviews cannot use the level of precept in affected areas as justification to approve or disapprove of a scheme.

Council Tax Schedule 2022/23 (annually)	Band A (£)	Band B (£)	Band C (£)	Band D (£)	Band E (£)	Band F (£)	Band G (£)	Band H (£)
Warminster Town Council	1,447.78	1,689.08	1,930.37	2,171.68	2,654.28	3,136.87	3,619.47	4,343.36

Community Governance Review 2022-2023

cgr@wiltshire.gov.uk

Map of Warminster



Map of Planned Major Development to 2027

